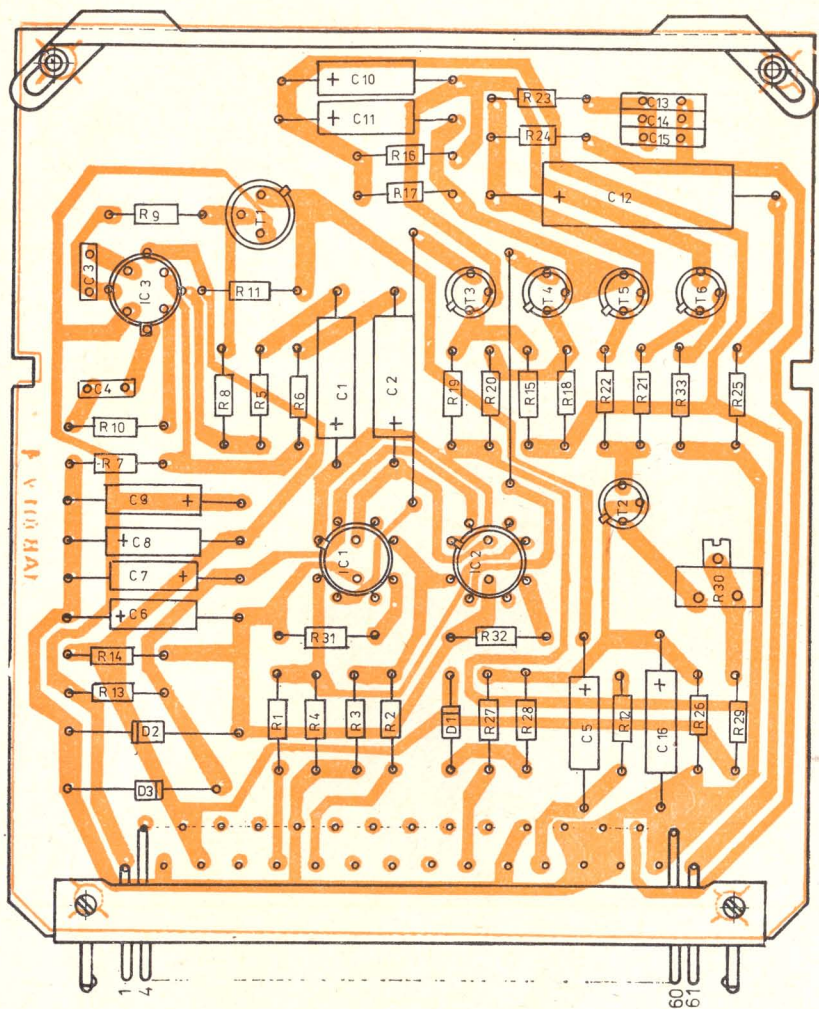


Zesilovač odchyky
Усилитель сигнала ошибки
Deviation amplifier

1AF 011 91

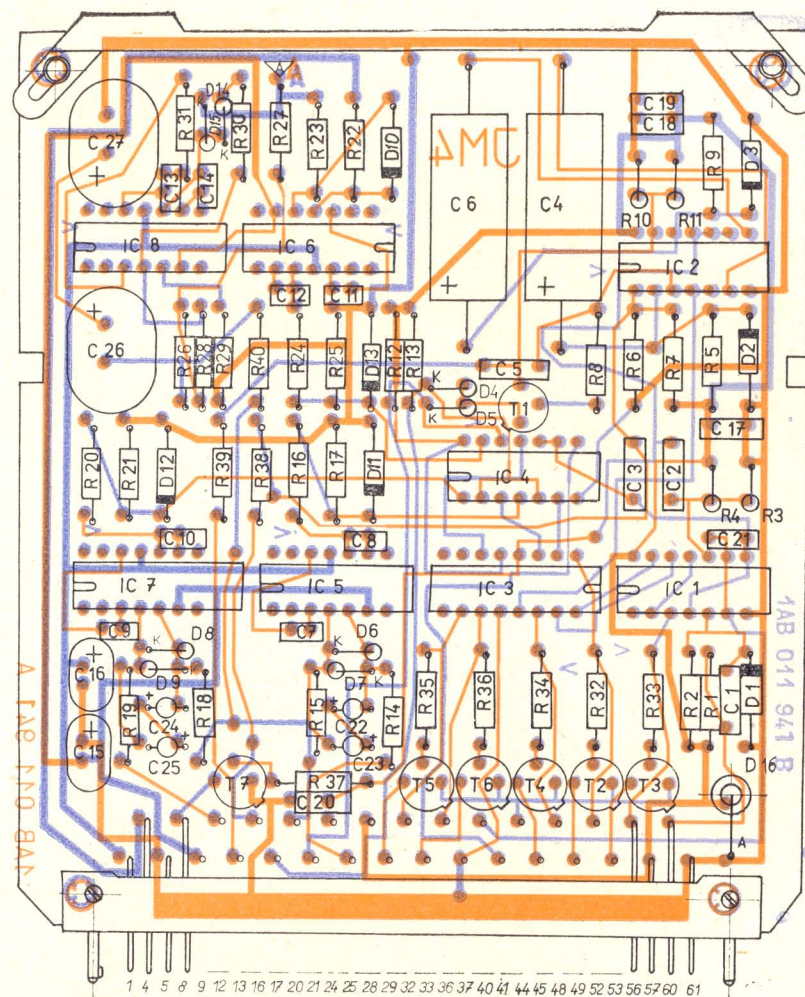
Fázové detektory a posouvač fáze
Фазовые детекторы и фазовращатель
Phase detectors and phase shifter

1AF 011 92



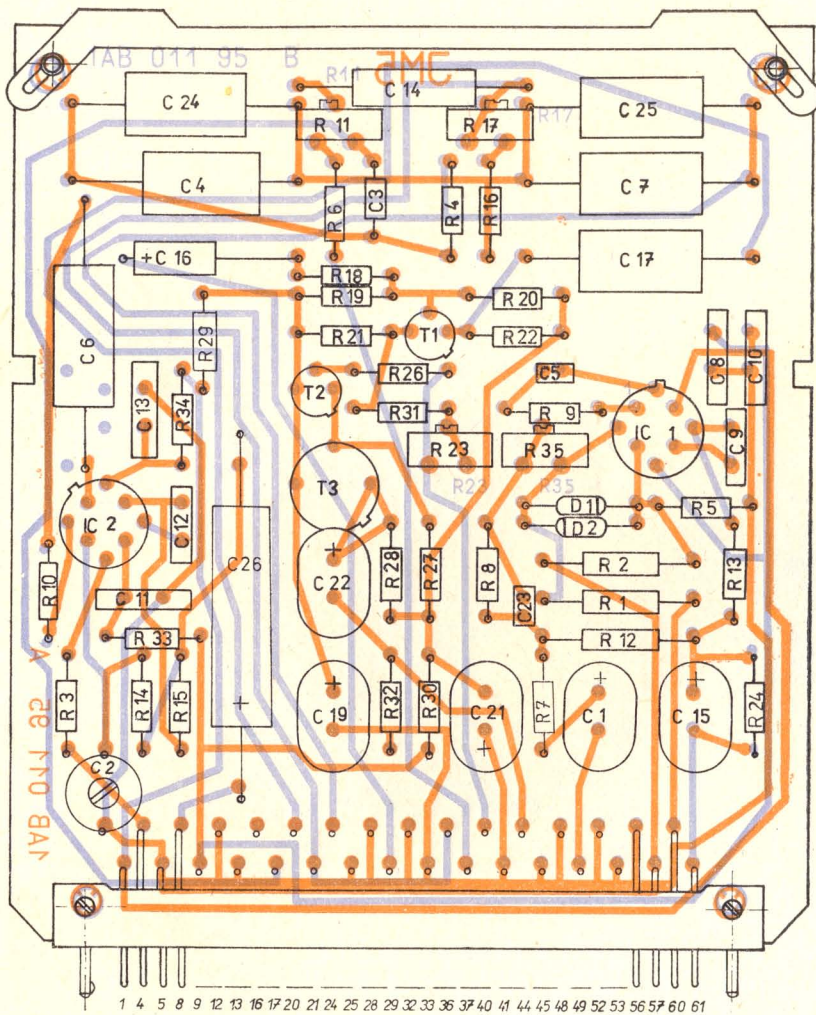
Zesilovač smyčky pro automatické vyrovnání druhé složky
 Усилитель петли для автоматической
 компенсации второй составляющей
 Loop amplifier for automatic compensation of the
 second component

1AF 011 93



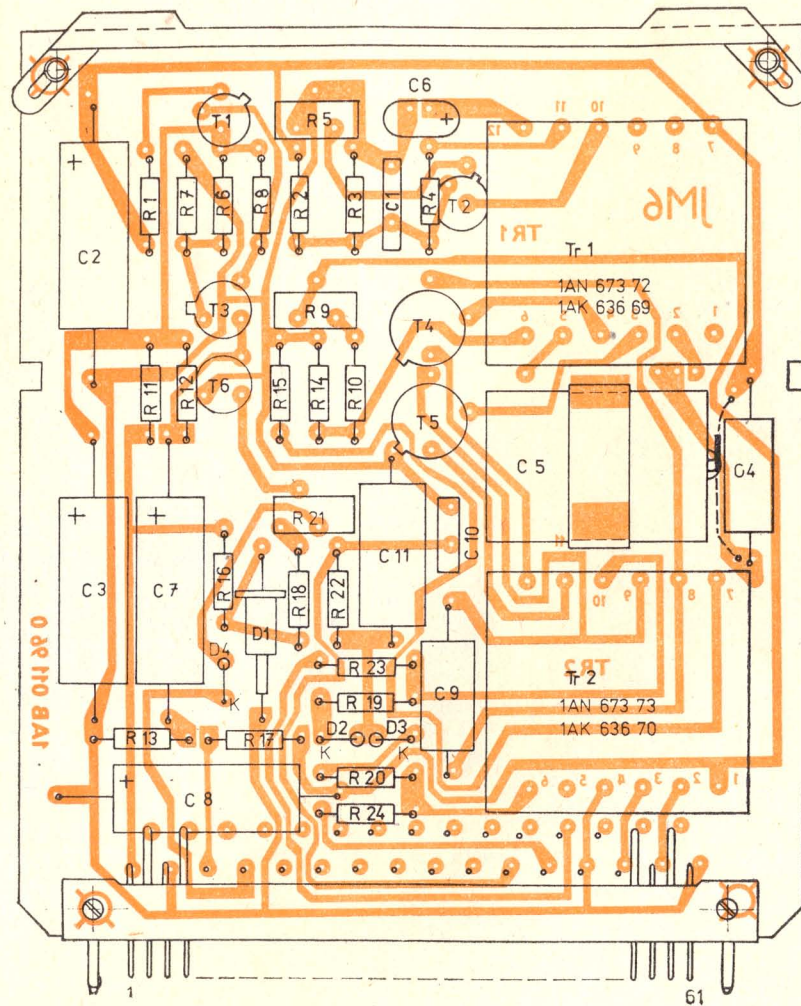
Řídicí jednotka (komparátory a paměti)
 Блок управления (компараторы и запоминающие
 устройства)
 Control unit (comparators and memories)

1AF 011 94



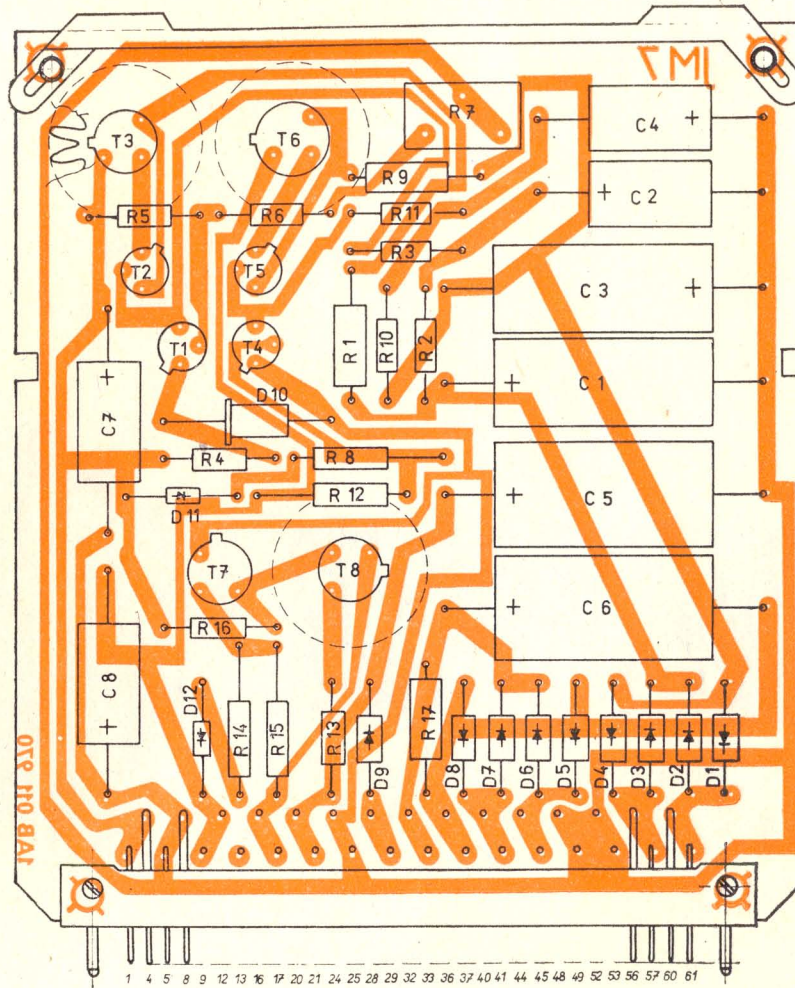
Pomocné obvody
 Вспомогательные цепи
 Auxiliary circuits

1AF 011 95



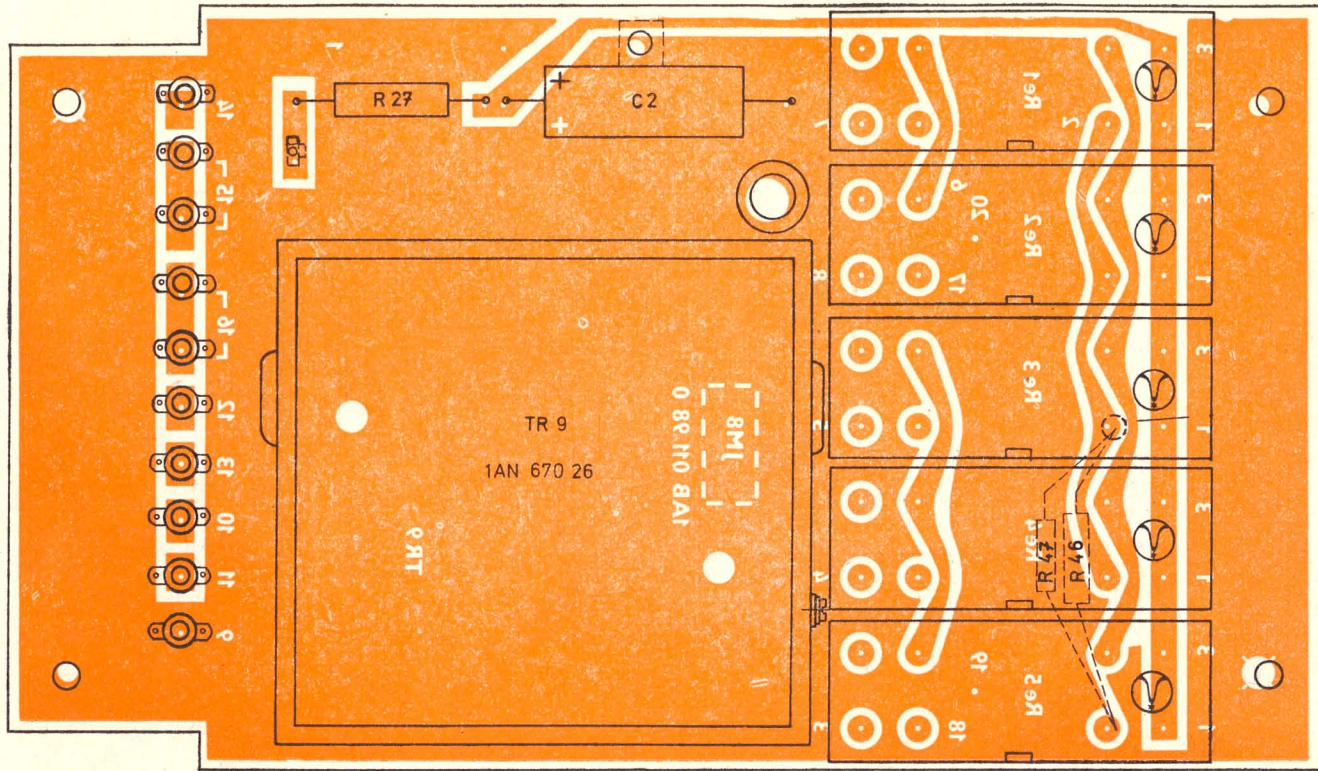
Generátor měřicího signálu 1 kHz
 Генератор измерительного сигнала 1 кГц
 Generator of 1 kHz measuring signal

1AF 011 96



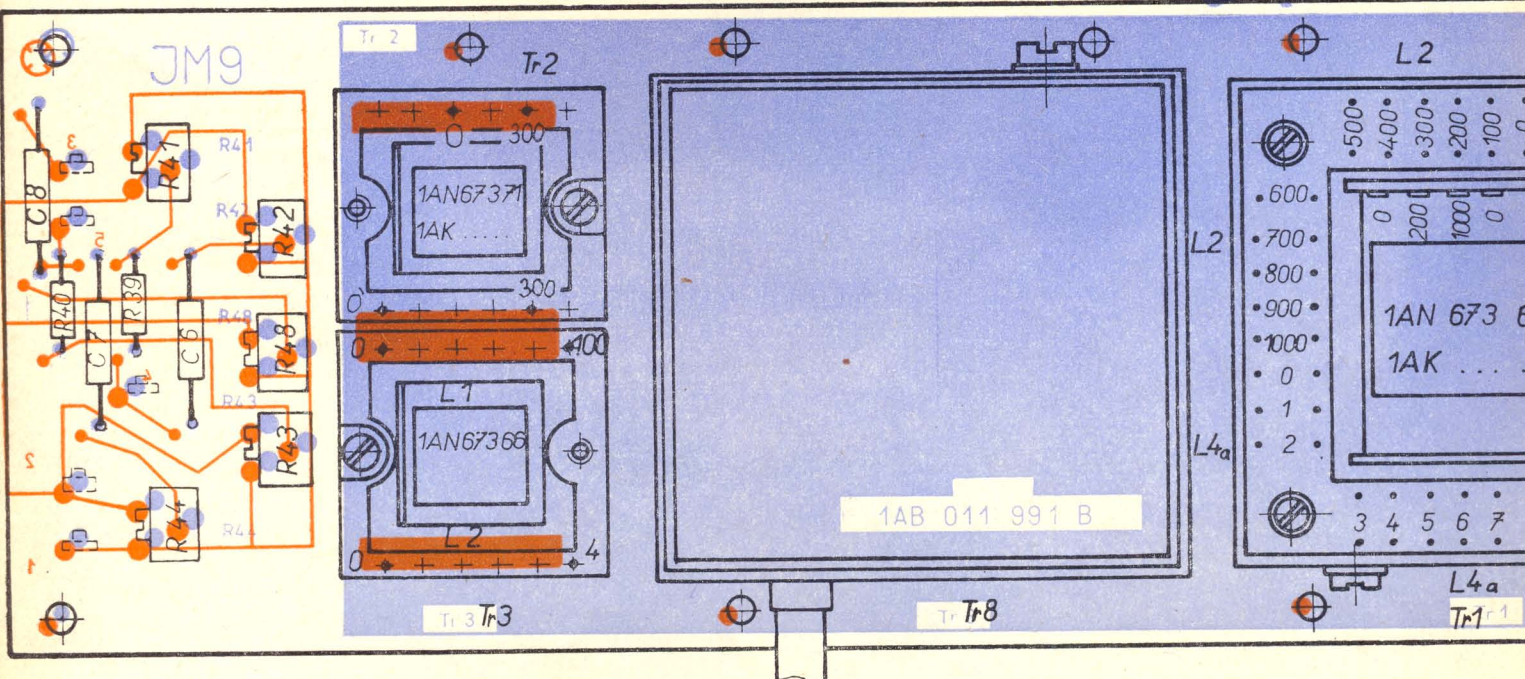
Stabilizované zdroje
 Стабилизированные источники питания
 Stabilized supplies

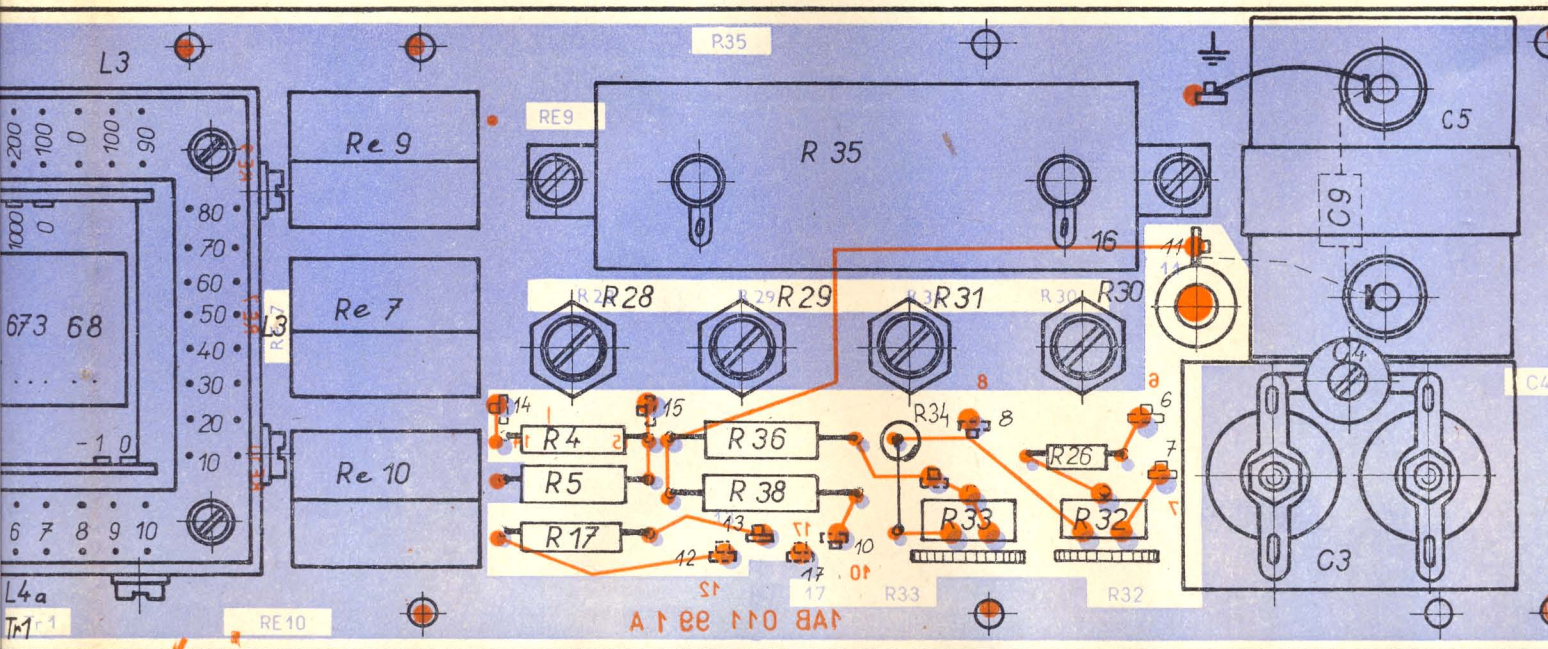
1AF 011 97



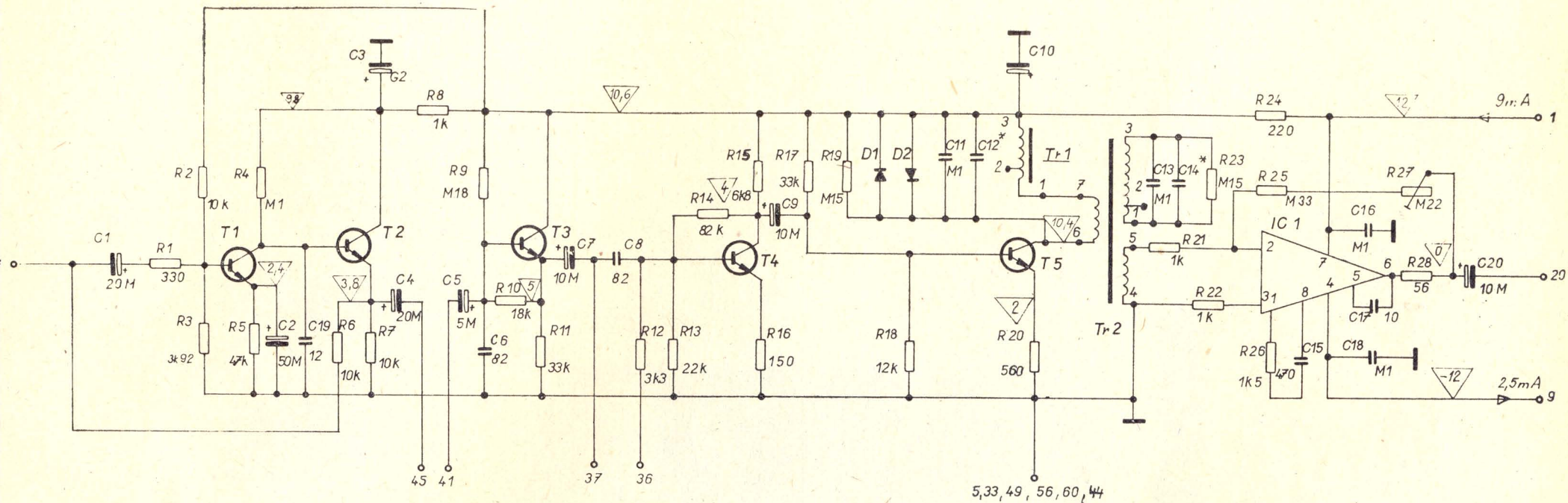
Transformátor I
 Трансформатор I
 Transformer I

1AF 011 98





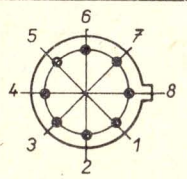
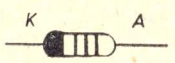
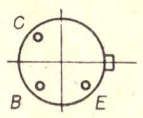
Jednotka montážní
 Монтажный блок
 Mounting unit



T1, T2, T3, T4, T5 - KC 509

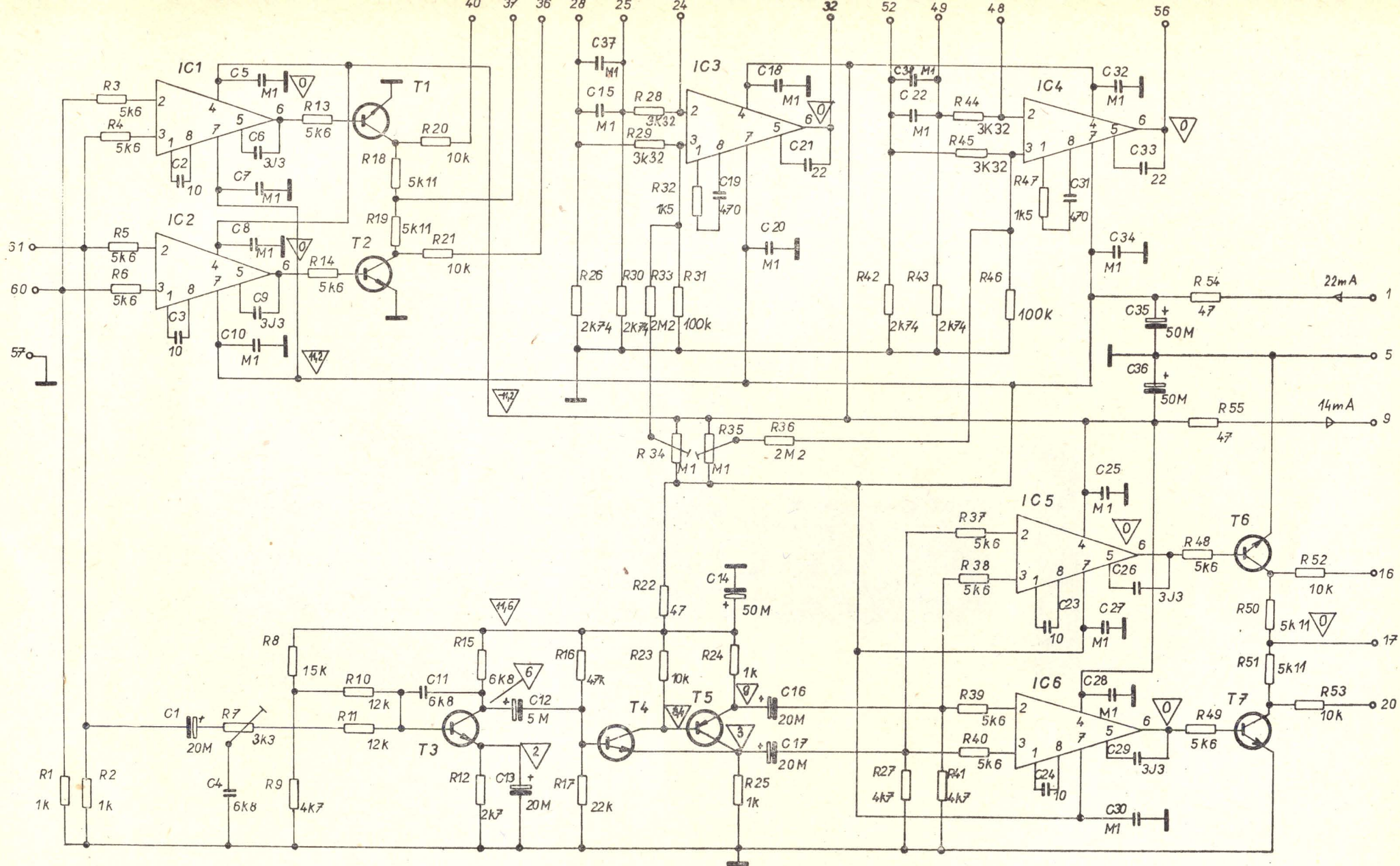
D1 D2 - KA 262

IC1 - MAA 502



Zesilovač odchylky
Усилитель сигнала ошибки
Deviation amplifier

1AF 011 91



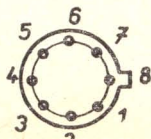
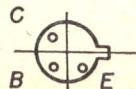
T1, T2, T3, T4, T6, T7 - KC 509

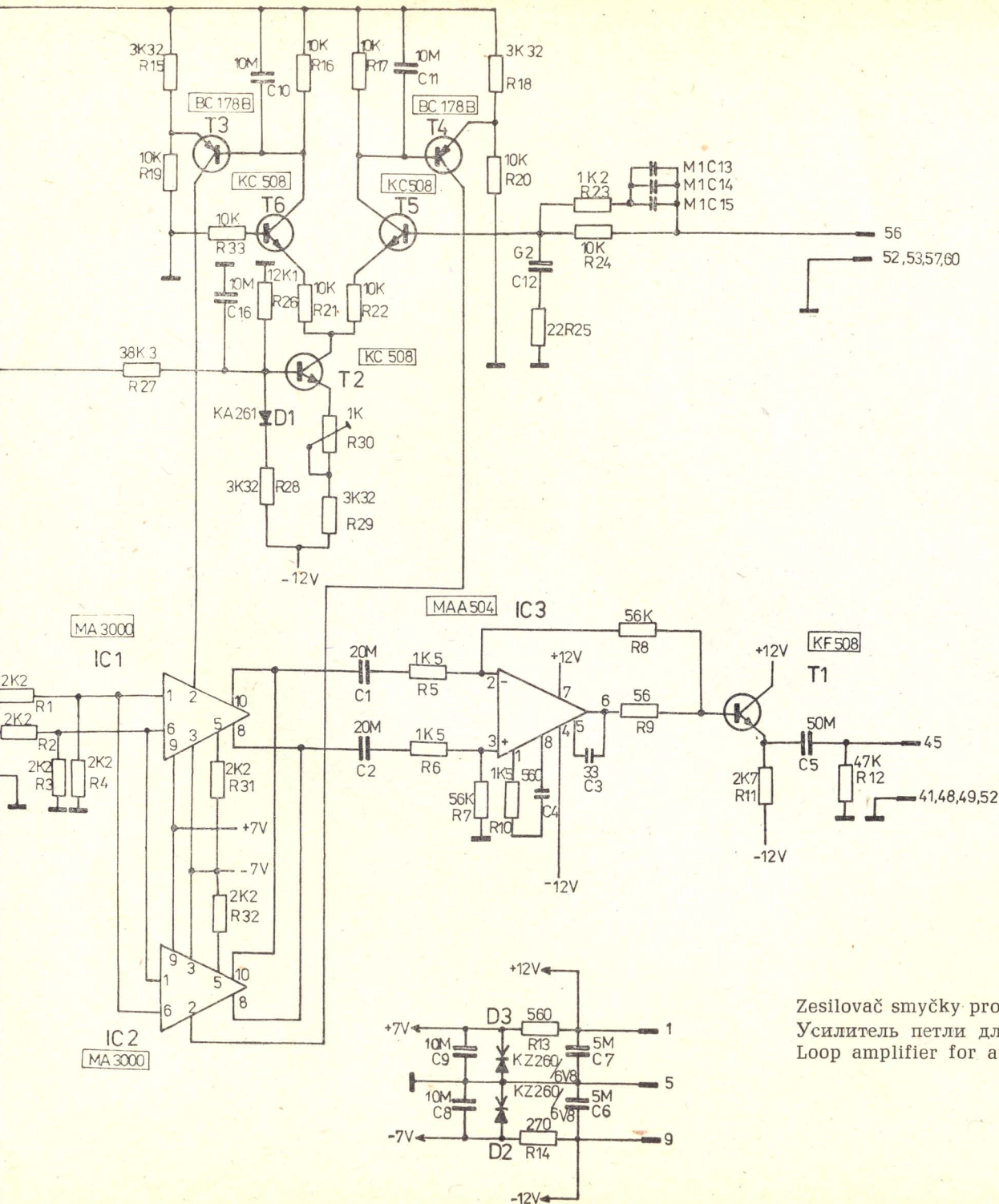
IC1, IC2, IC3, IC4, IC5, IC6 - MAA 502

Фазовé детекторы а посувач фазе
 Фазовые детекторы и фазовращатель
 Phase detectors and phase shifter

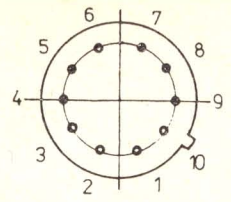
1AF 011 92

T5 - KF 517

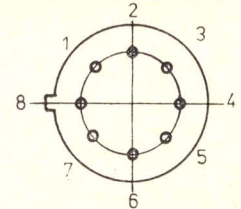




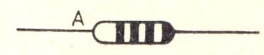
IC1, IC2 - MA 3000



IC3 - MAA 504



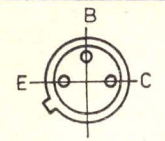
D1 - KA 261



D2, D3 - KZ 260/6 V 8



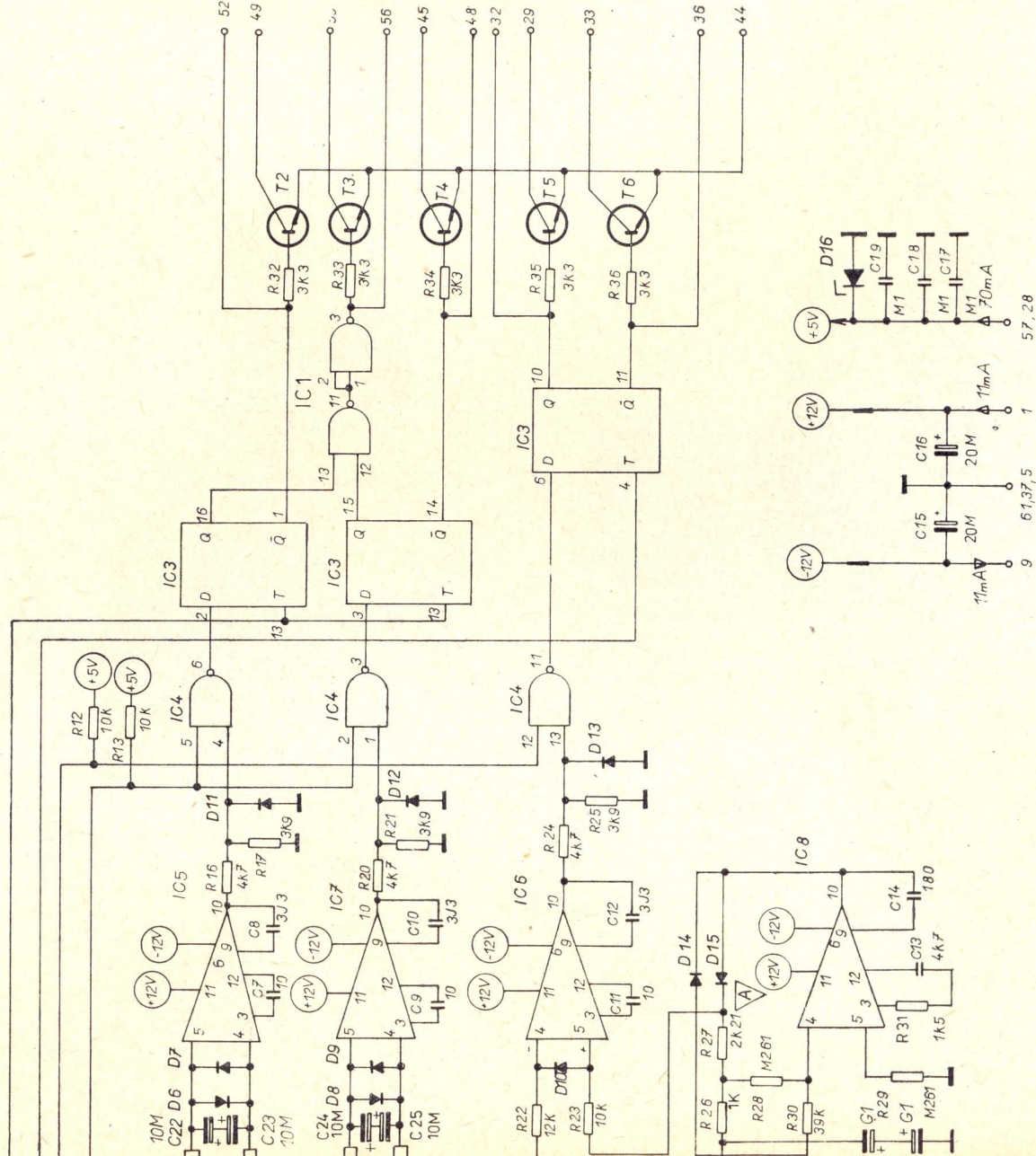
T3, T4 - BC 178 B
T2, T5, T6 - KC 508
T1 - KF 508



Zesilovač smyčky pro automatické vyrovnání druhé složky
Усилитель петли для автоматической компенсации второй составляющей
Loop amplifier for automatic compensation of the second component

1AF 011 93

BM 539/9

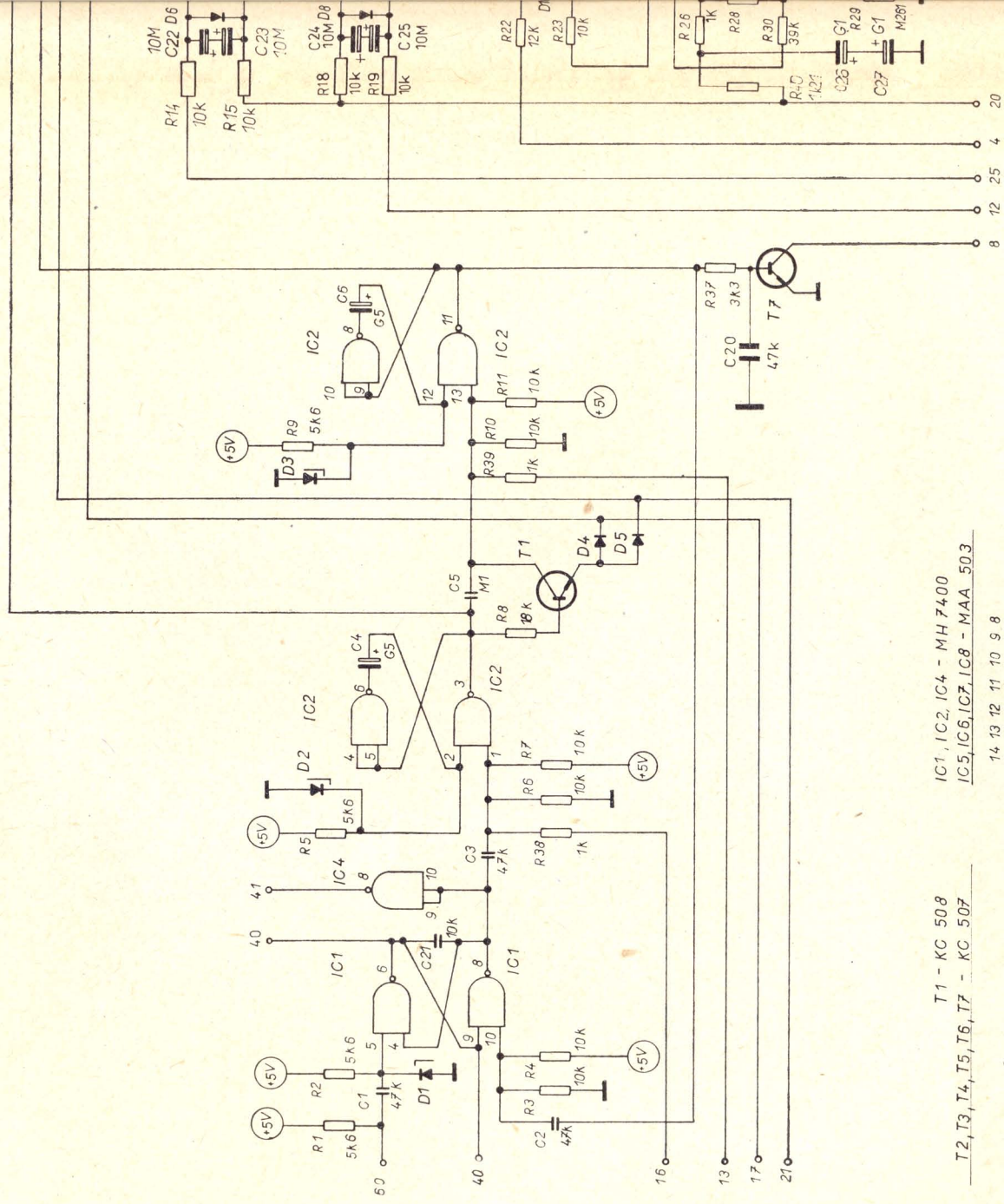


Z 71

Řídící jednotka (komparátory a paměti)
 Блок управления (компараторы и запоминающие устройства)
 Control unit (comparators and memories)

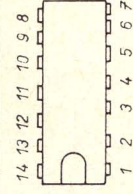
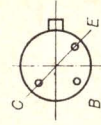
1AF 011 94

BM 539/10



T1 - KC 508

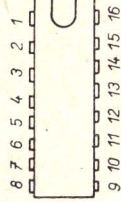
IC1, IC2, IC4 - MH 7400
 IC5, IC6, IC7, IC8 - MAA 503



D1, D2, D3 - KZ 140



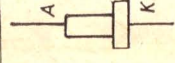
IC3 - MH 7475

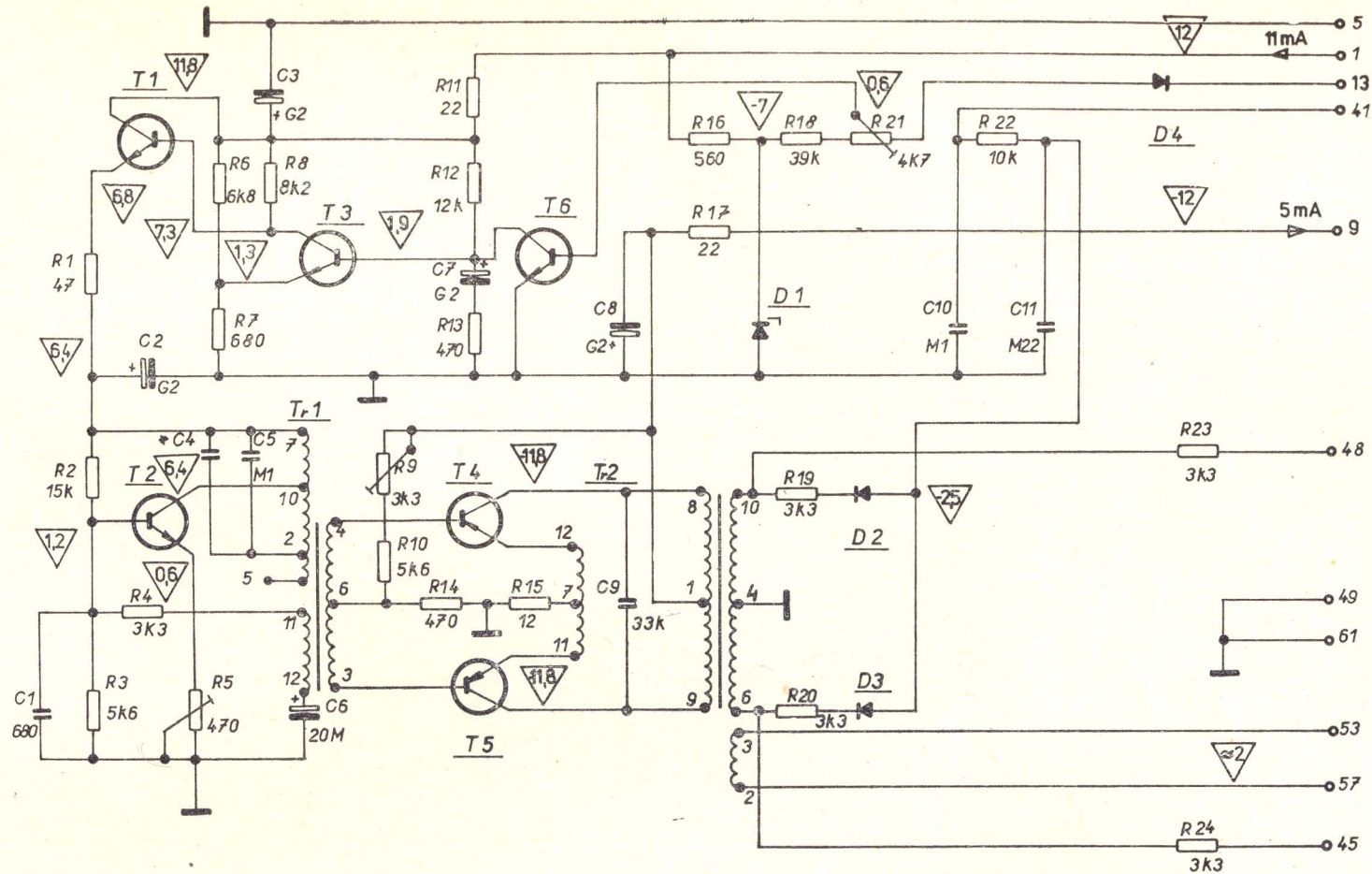


D4 + D15 - KA 262



D16 - KZZ 71





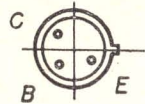
T1, T2, T3, T6 - KC 508

T4, T5 - 1AN 114 92

D1 - 1AN 112 95

Generátor měřicího signálu 1 kHz
 Генератор измерительного сигнала 1 кГц
 Generator of 1 kHz measuring signal

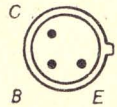
1AF 011 96



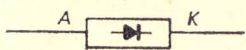
D2, D3, D4 - KA 261



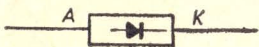
T1, T2, T7 - KC 508
 T3, T8 - KF 507
 T4, T5 - BCY 78
 T6 - KF 517



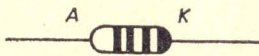
D1, D2, D3, D4, D5, D6, D7, D8 - KY 130/150



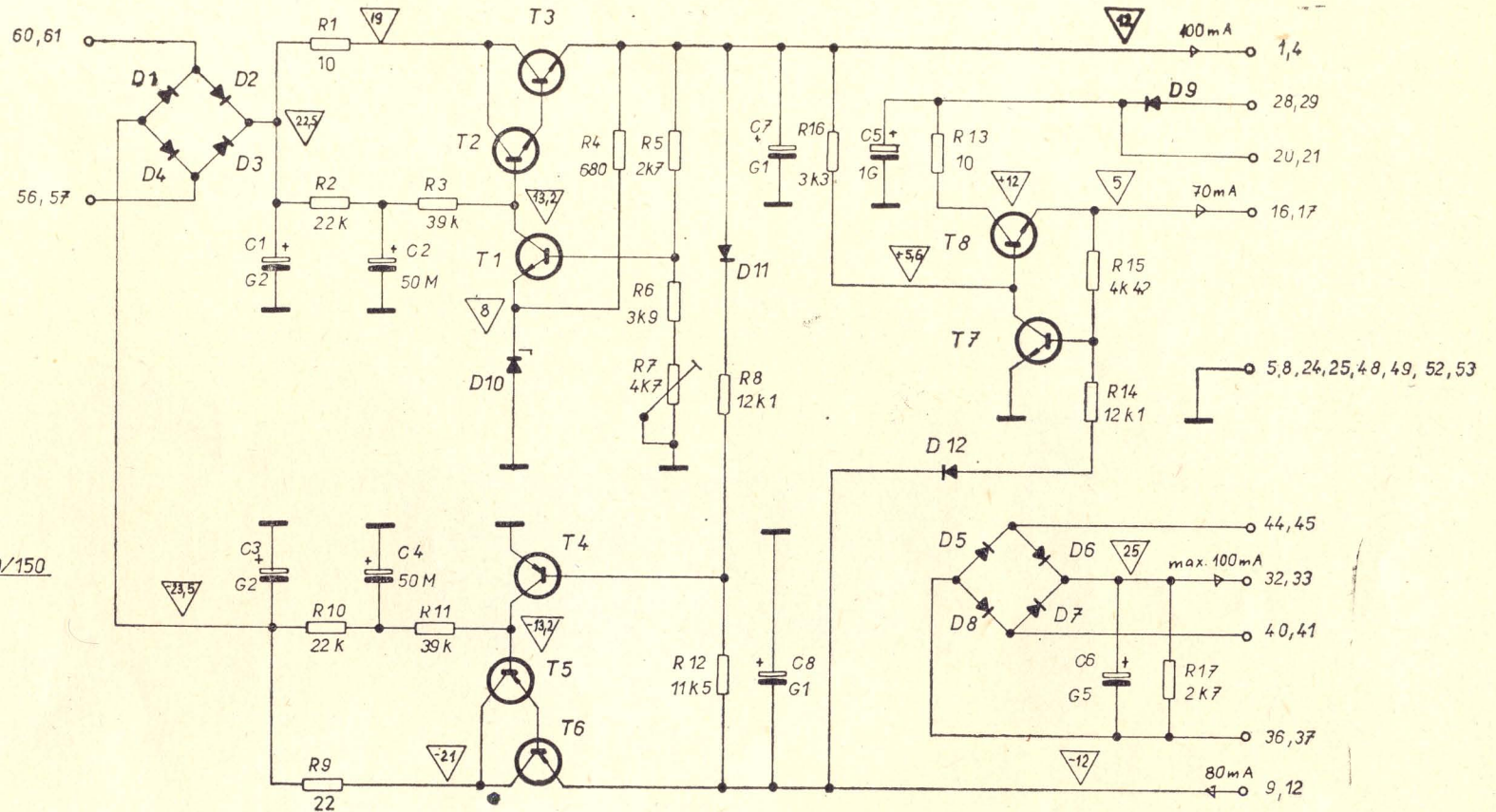
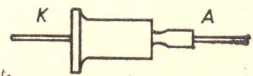
D9 - KY 130/80



D11, D12 - KA 262

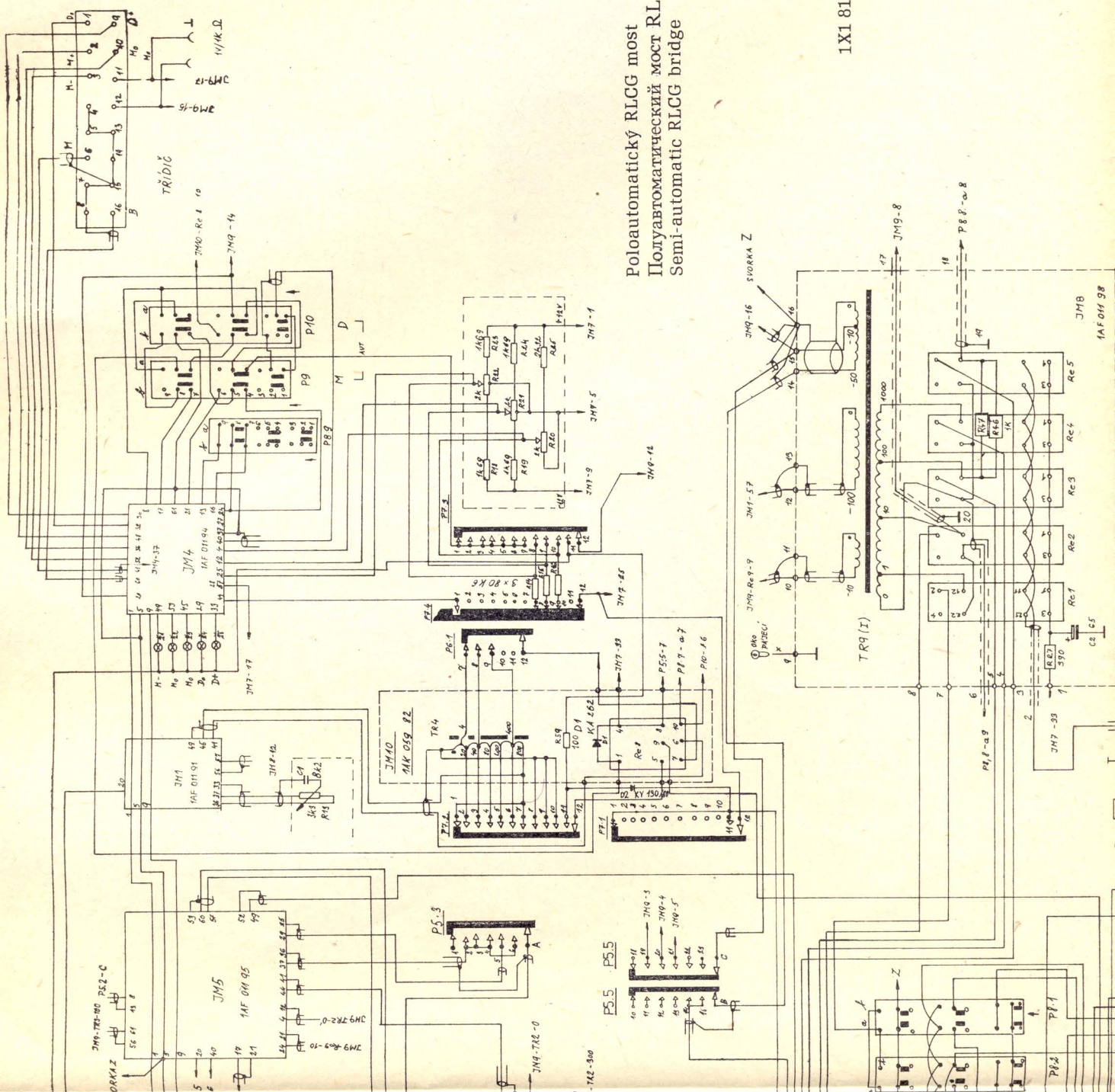


D10 - KZZ 72



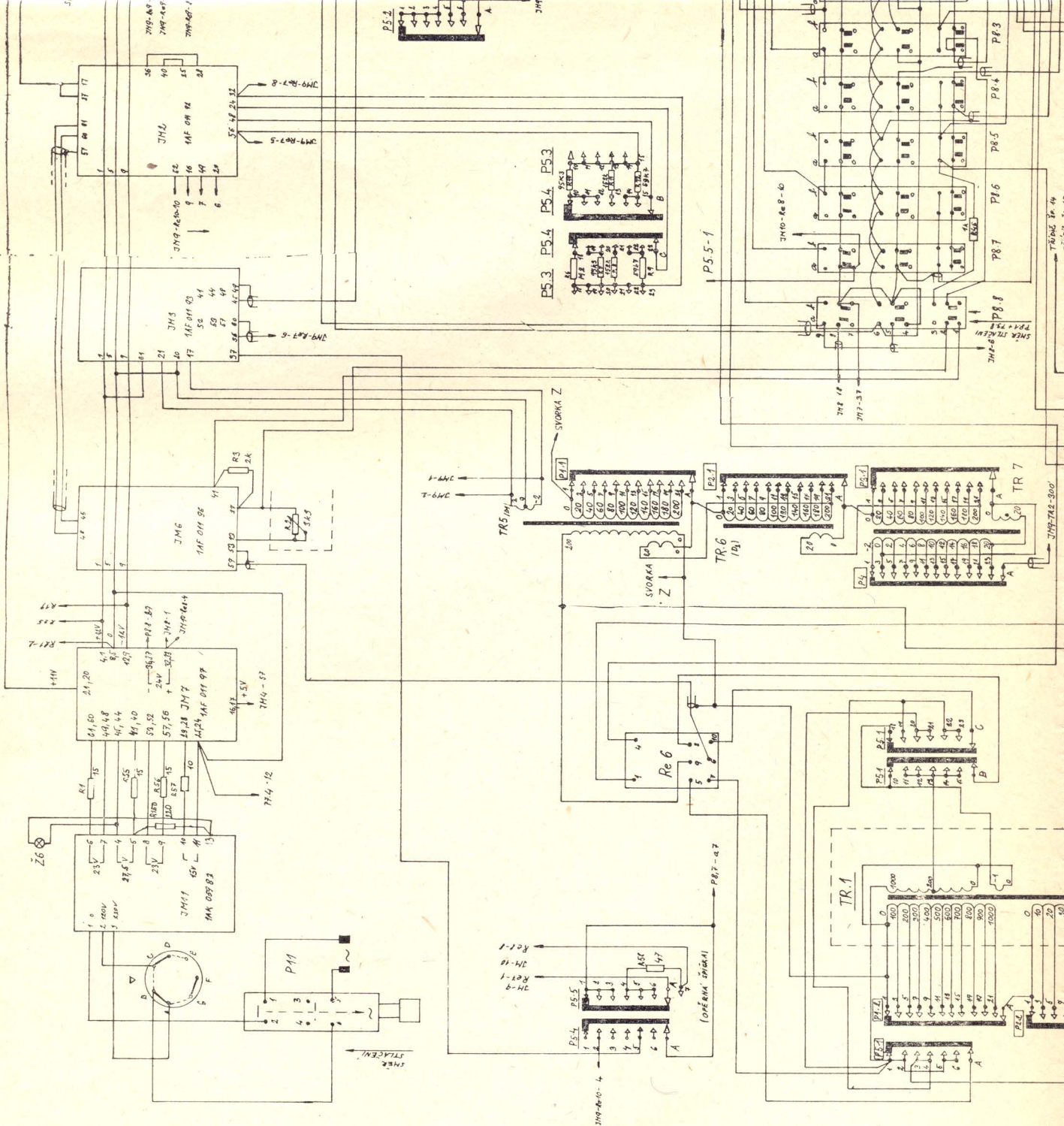
Stabilizované zdroje
 Стабилизированные источники питания
 Stabilized supplies

1AF 011 97



Полуавтоматический RLCG мост
 Poluautomatický RLCG most
 Semi-automatic RLCG bridge

1X1 818 04



P5.5-1

P5.3 P5.4 P5.3 P5.3

TR 7

Re 6

TR.1

P8.7-a.7

TR 6

TR 5

Re 1

Re 2

Re 3

Re 4

Re 5

Re 6

Re 7

Re 8

Re 9

Re 10

Re 11

Re 12

Re 13

Re 14

Re 15

Re 16

Re 17

Re 18

Re 19

Re 20

Re 21

Re 22

Re 23

Re 24

Re 25

Re 26

Re 27

Re 28

Re 29

Re 30

Re 31

Re 32

Re 33

Re 34

Re 35

Re 36

Re 37

Re 38

Re 39

Re 40

Re 41

Re 42

Re 43

Re 44

Re 45

Re 46

Re 47

Re 48

Re 49

Re 50

Re 51

Re 52

Re 53

Re 54

Re 55

Re 56

Re 57

Re 58

Re 59

Re 60

Re 61

Re 62

Re 63

Re 64

Re 65

Re 66

Re 67

Re 68

Re 69

Re 70

Re 71

Re 72

Re 73

Re 74

Re 75

Re 76

Re 77

Re 78

Re 79

Re 80

Re 81

Re 82

Re 83

Re 84

Re 85

Re 86

Re 87

Re 88

Re 89

Re 90

Re 91

Re 92

Re 93

Re 94

Re 95

Re 96

Re 97

Re 98

Re 99

Re 100

Re 101

Re 102

Re 103

Re 104

Re 105

Re 106

Re 107

Re 108

Re 109

Re 110

Re 111

Re 112

Re 113

Re 114

Re 115

Re 116

Re 117

Re 118

Re 119

Re 120

Re 121

Re 122

Re 123

Re 124

Re 125

Re 126

Re 127

Re 128

Re 129

Re 130

Re 131

Re 132

Re 133

Re 134

Re 135

Re 136

Re 137

Re 138

Re 139

Re 140

Re 141

Re 142

Re 143

Re 144

Re 145

Re 146

Re 147

Re 148

Re 149

Re 150

Re 151

Re 152

Re 153

Re 154

Re 155

Re 156

Re 157

Re 158

Re 159

Re 160

Re 161

Re 162

Re 163

Re 164

Re 165

Re 166

Re 167

Re 168

Re 169

Re 170

Re 171

Re 172

Re 173

Re 174

Re 175

Re 176

Re 177

Re 178

Re 179

Re 180

Re 181

Re 182

Re 183

Re 184

Re 185

Re 186

Re 187

Re 188

Re 189

Re 190

Re 191

Re 192

Re 193

Re 194

Re 195

Re 196

Re 197

Re 198

Re 199

Re 200

Re 201

Re 202

Re 203

Re 204

Re 205

Re 206

Re 207

Re 208

Re 209

Re 210

Re 211

Re 212

Re 213

Re 214

Re 215

Re 216

Re 217

Re 218

Re 219

Re 220

Re 221

Re 222

Re 223

Re 224

Re 225

Re 226

Re 227

Re 228

Re 229

Re 230

Re 231

Re 232

Re 233

Re 234

Re 235

Re 236

Re 237

Re 238

Re 239

Re 240

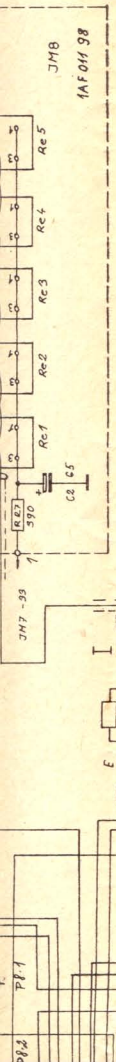
Re 241

Re 242

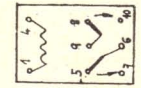
Re 243

Re 244

Re 245

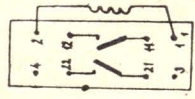


Re 6 ÷ Re 10

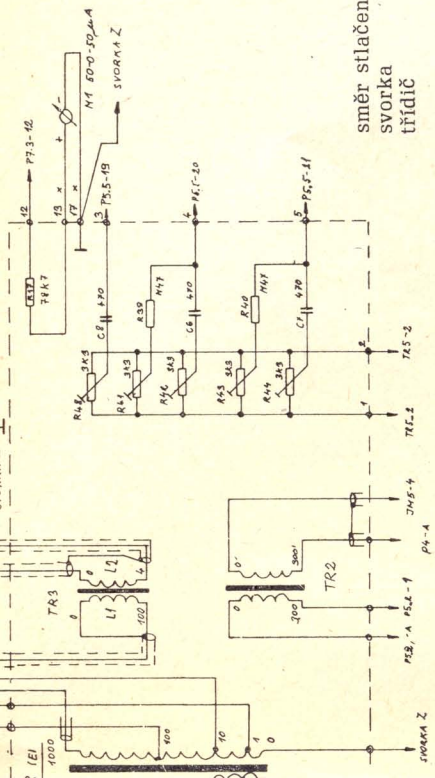


směr stlačení svorka třídící — напряжение нажатия — зажим — сортирующее устройство

Re 1 ÷ Re 5



direction of depression terminal sorter



BM 539/14

